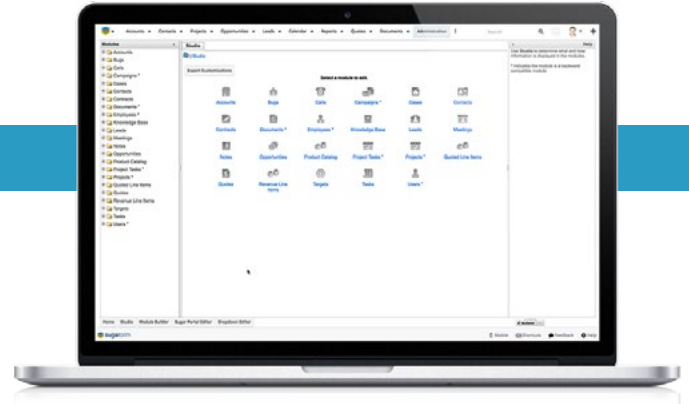




High-Performance ETL Solution

Your data, your choice. wTransit is a low-code ETL (Extract, Transform, Load) tool designed to easily grant you control over your data-based processes.



Many organizations work with multiple software platforms and need to collect that data in a central hub (such as a CRM). However, databases vary from one platform to another, and raw data from one source may not properly align with your destination source.

wTransit enables you to connect to multiple data sources, filter the information you need, define your destination, and automate the workflow at regular intervals. Our flexible, low-code approach to how you can handle your data enables you to build processes specific to your unique business needs.

wTransit Benefits



Low-Code Approach

wTransit's visual interface allows you to pick what operations your data needs to go through before reaching its destination - no advanced programming language required!



Automated Workflows

Filter the data you need and choose how to transform it before it gets stored in its destination. Once set up, wTransit allows you to save and schedule your processes to run at regular intervals.



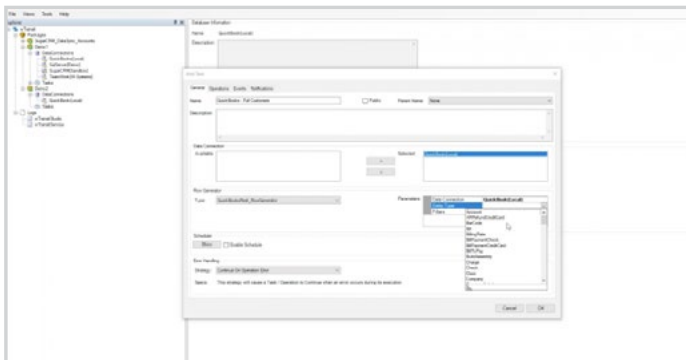
Data Sources Support

wTransit can connect multiple CRM, ERP, and Project Management platforms and data sources, such as SugarCRM, Salesforce, QuickBooks, MySQL, MSSQL, CSV, FPT, REST, SOAP, and more.



Set Up Notifications

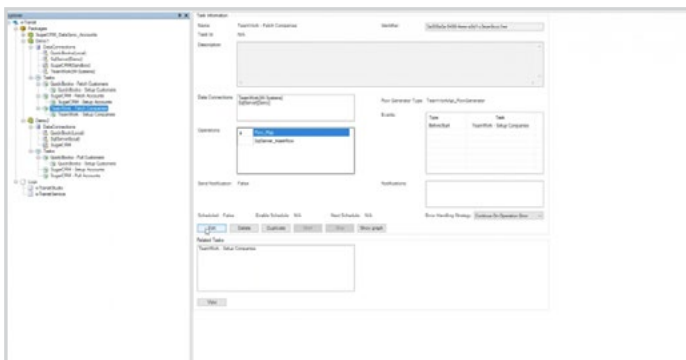
wTransit can send email notifications to inform you whether your data processes successfully ran or not. Emails also include reasons for potential failures.



Data Integration

wTransit's data integration capabilities allow you to take advantage of our tools for a vast array of use cases, including:

- Data Migration, such as transferring your records from one CRM to Sugar.
- Building a Data Warehouse that collects Sugar information for later use with a Business Intelligence (BI) tool like Amazon QuickSight



Application Integration

wTransit enables you to configure complex data processes to move information between multiple software platforms. A few examples include:

- Creating task records in SugarCRM using information from your project management solution (such as Teamwork Projects), then pushing the data in your ERP system (e.g. QuickBooks) to generate invoices based on time spent on the tasks.
- Updating your Sugar Calls records with call logs from your phone system.
- Syncing your Sugar product catalog with the inventory from your ERP system.



Business Automation

By continuously syncing data, wTransit can help your organization create backups of your data at regular intervals, effectively reducing the effects of potential system failures or accidental data loss.