

Sugar Integration to Bing Maps

SugarCRM enables businesses to create customers for life with the world's first intelligent, no touch customer experience (CX) platform. W-Systems offers a series of add-ons to Sugar to extend its core capabilities.

Meet wMaps: Sugar Integration to Bing Maps

Using wMaps, our integration to Microsoft Bing Maps you can view any list of Sugar accounts, contacts, leads, targets, opportunities or any other Sugar module plotted on a map. You will also be able to see quickly what accounts or leads are in closest proximity to each other and plot the results on a map or generate directions for a visit. The maps we generate are content rich and can incorporate details from your Sugar records directly on the maps.

Features



Search Sugar Records by Distance from Postal Code

You are holding an event and would like to invite all customers within 50 miles from the event location. With wMaps you can filter accounts list view using a new Distance search option and specify distance from a postal code's center point. You can save the result set to a Sugar target list for marketing purposes.



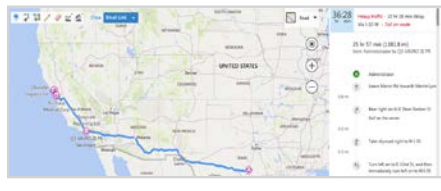
Map Sugar Filtered Records

You would like to see the distribution of customers or prospects in a specific territory. With Sugar you can create a filter in the accounts module to list the customers in a specific territory. wMaps can display the result of that list as pushpins on a map.



Map Current Records

You have a new prospective account and would like to get some geographic context and take a look at their office building. wMaps can produce a map that can be zoomed in all the way to the aerial photo detail of the building or location in question.



Generate Optimum Driving Directions

You are planning to travel in your sales territory and would like to plan the best sequence of account visits. From a filtered list in Sugar, select the specific accounts you would like to visit. wMaps can generate optimal directions and display the directions on a map. The directions can be emailed to your phone to integrate with maps on the phone.



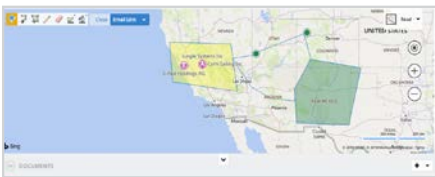
Show Closest Records

You are visiting a customer and would like to see a list of the closest prospective customers or other customers so you can plan some additional stops. wMaps will calculate the relative distance between the current record and all other records, and then show you the closest ones. From the list of closest records you can place them on a map or generate optimum driving directions.



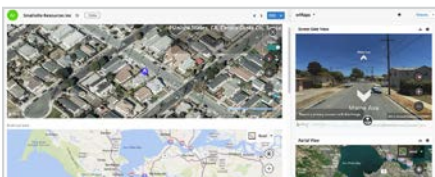
Send to Mobile Device

You have generated a map or directions and want to be able to send them to your own phone or a colleagues phone. Any wMap can be sent to your phone via email. In the top right of a map or directions screen there will be a Send via Email button. Press this link to generate an email with a link to the map that can be opened on your phone.



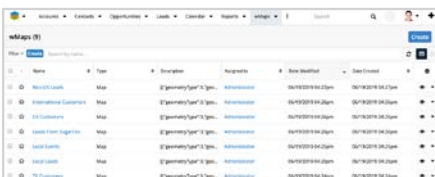
Draw on Maps

You need to further modify your generated maps with custom maps or areas. Maps can now be customized with objects such as lines, shapes and pushpins. All modifications can be saved and accessed for later use.



wMaps Field and Dashlet

If you need quick access to a record's mapped location in Record View, wMaps includes a field and dashlet that support multiple display views, including Road, Aerial, Street Side, and Bird's Eye.



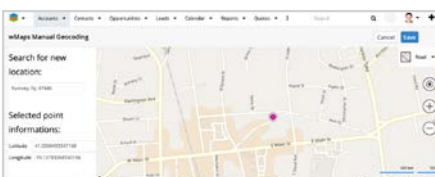
Save Maps

You can create and customize as many maps as needed. These maps can then be saved, and accessed at any time from Sugar.



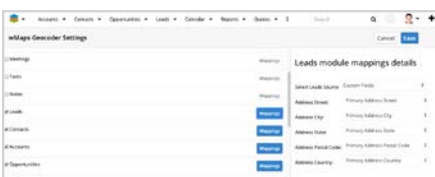
Filter by Drawing

You can select an area on the map and all the records in that area will automatically generate. It also allows saving the filter for later use.



Manually Geocode Records

You need fast and accurate access to a record's location on the map. Geocode Records Manually allows you to pinpoint an exact address on the map for better accuracy.



Enable wMaps for Any Module

You can enable wMaps for any module by simply mapping the module either by address or by a related record.