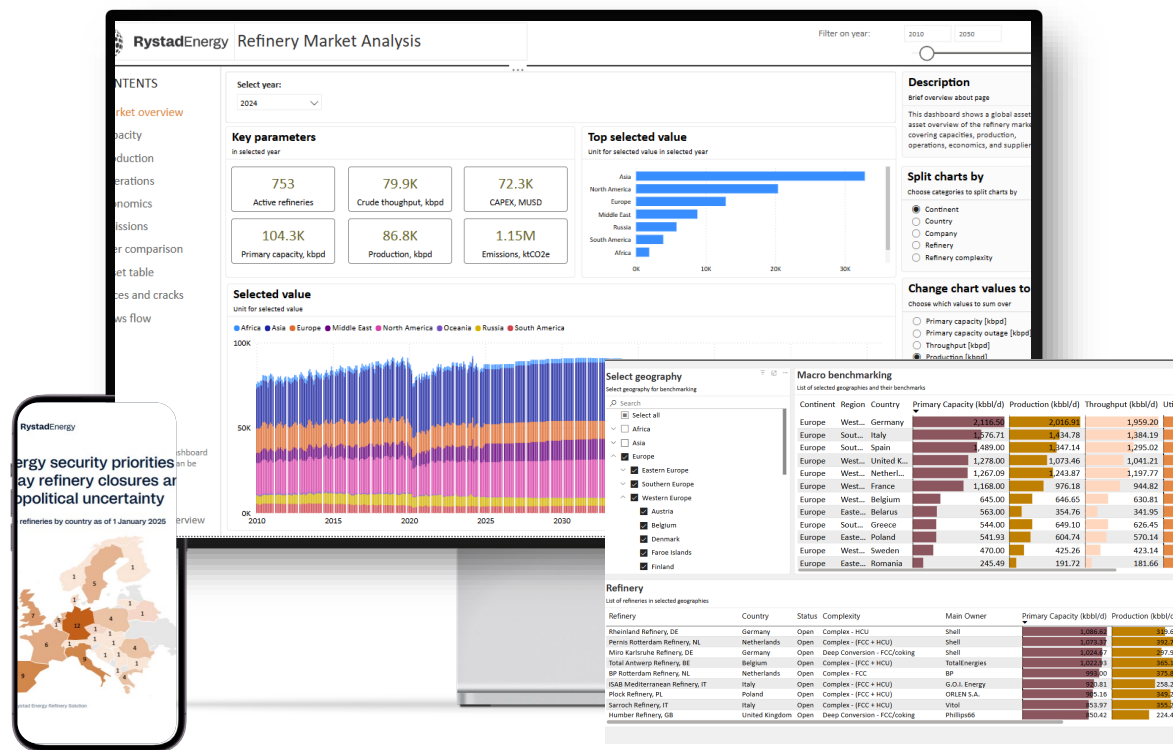


Stay ahead of the refinery markets with a complete overview of the market trends and downstream supply dynamics



Rystad Energy's Refinery Database is a comprehensive, bottom-up asset-level database. It provides key insights into the refining sector by combining reported data with proprietary models to ensure accurate and reliable analysis.

→ Track performance and spot strategic opportunities with detailed historical data and long-term forecasts on capacities, utilization, feedstocks, emissions, product output and refinery configurations across the global fleet.

- Benchmarking tool to compare performance against peers

- Updates on capacities news, policies, deals and strategic announcements

- ➔ Track refinery projects and capacity additions worldwide

- ➔ Gain comprehensive coverage of all key refining aspects, accessible through dashboards, the cube browser, or our valuation tool

➔ More on our website

Refinery Solution

Solution coverage



Data

Our proprietary Cube browser – Refinery Cube: Gain deep and granular insights using our proprietary databases

Interactive web-based dashboard: Access data in easy-to-use interfaces curated for your workflows

Datafeed integration: via ftp, OData or Snowflake

Models: Fully editable, transparent, Excel-based models designed for better decision-making

What is included



RefineryCube



Refinery Market Analysis Dashboard

- Covering global projects
- Using Rystad Energy's Ucube data base



Economic Model

A refinery valuation tool that allows users to assess assets globally, using our base case runs as the default starting point. It is built on the same principles as the Ucube economic model.

How this helps you



Live Market Insights: Updated with dynamic data feeds for real-time decision support.



Interactive Intelligence: Visualize, filter, and drill down into the data that matters most.



Comprehensive Visibility: Covers every major and minor refinery project globally.



Customizable Assumptions: Adjust input parameters like margins, utilization, and feedstock prices to reflect your reality.



Analytics

A comprehensive library of expert reports and commentaries

Enhance productivity and unlock actionable insight with AskRystad, our AI-powered assistant.



Broad coverage of fundamental aspects of the refining sector, providing detailed insights into a vast range of active, closed, and upcoming assets from 2005 to 2050.



Insights into historical trends and future developments, ensuring a detailed and forward-looking perspective on the refining landscape.



Access asset-level insights across all regions and refinery types.



Access historical trends with projections to support both retrospective reviews and strategic planning

Get insights that enable proactive planning with forecasts and scenarios aligned with market, policy, and investment shifts.