



LedgeGuard™

Open Top Pallet Safety Gate
Meets OSHA Requirements
1910.29(b) and 1926.502(b)

Features:

- OSHA-compliant dual gate system for pallet movement
- Double-sided gate, when one side is open the other side is closed
- Easy to open and close without the use of struts
- Clear interior open of 59.8" wide X 61.9" deep for easy pallet placement
- Open top for tall pallets or when goods need to be hoisted directly out of the gate
- Hardened gear set for long life and low cost of ownership
- No maintenance required



Dual Gate System for the Utmost in Safety

Single-sided gates on a mezzanine; like a sliding gate, often are operated unsafely. When the gate is moved, often the worker is within 6' of the fall edge and not tied off. A double-sided gate ensures there is always a barrier between the fall edge and the worker, and no harness or OSHA tie off point is required.

Easy to Use

The 60" X 60" gate has a generous landing area for common pallet sizes and the open top accommodates tall pallets and hoisting. It takes little effort to raise and lower the gate and is designed without gas struts, a common point of gate failure.

Best Value

The LedgeGuard is cost effective, designed for long service life with a low total cost of ownership for the best value in a pallet gate.

Why Choose Garlock?

- Rigorously Tested to Exceed OSHA & ANSI Standards
- In-House Engineering
- 100+ Years of Industry Experience
- Full Passive Fall Prevention Portfolio
- Custom Engineered Products Available

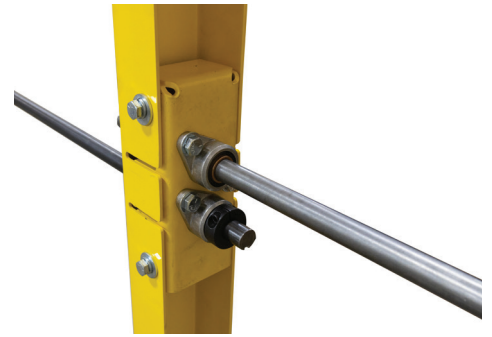
Features



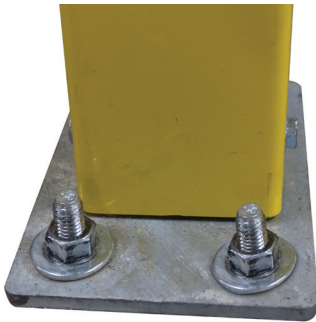
Dual gate system ensures the worker is always safe



A wide range of options to close the gap between the existing hand railing and the gate



Hardened gear teeth and individually replaceable gears for low cost of ownership



Anchors sold separately, depends on type of decking



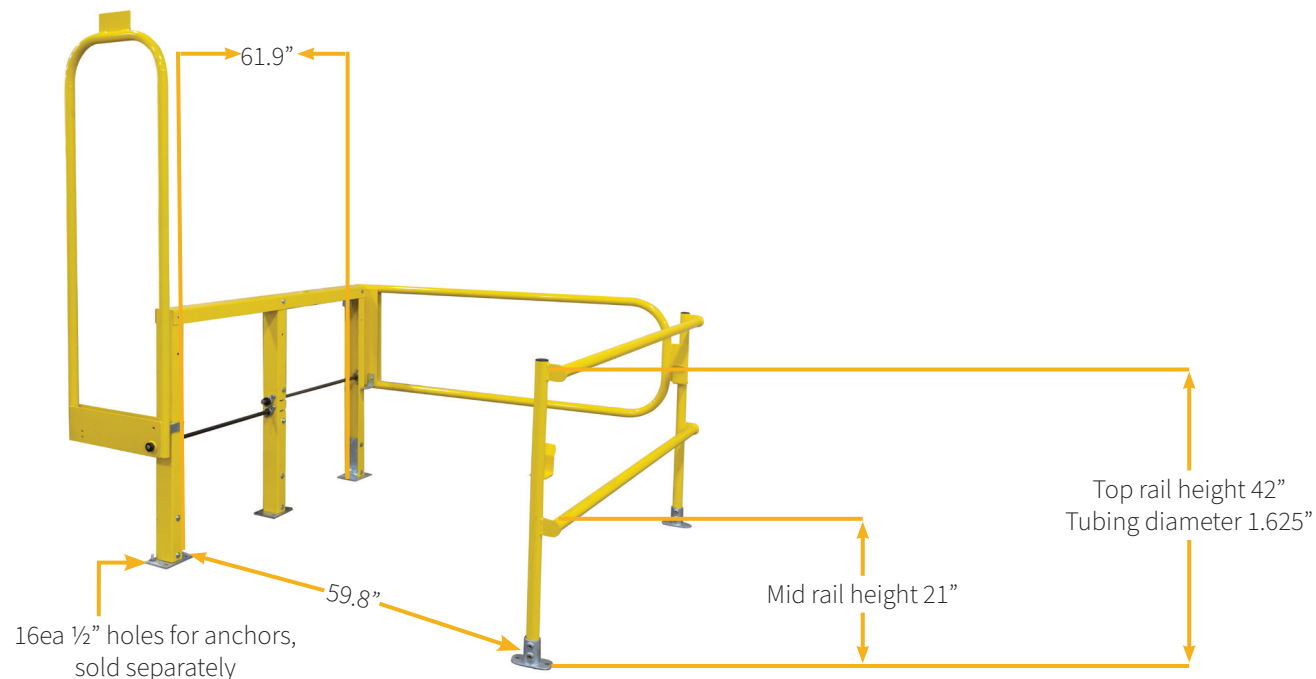
Integrated guide ensures the gate is OSHA compliant



Easy to open and close without the use of gas struts

Specifications

P/N 431-001-001 60" X 60" LedgeGuard



Due to continuous improvement, specifications are subject to change without notice.

GARLOCK
SAFETY SYSTEMS

©2023 Garlock Safety System, All rights reserved.

P : 877.791.4446
E : safetyorders@garlockequip.com
GARLOCKSAFETY.COM

Address:
2601 Niagara Ln N.
Plymouth, MN 55447

161793
07-2023