

Smart Matching and the New Documents Screen

Simple Fund 360 Education Week

Intelligent, cloud-based SMSF software to streamline SMSF compliance management and administration.



Simple Fund 360 Education Week

- Building the foundation of your SMSF knowledge
- How to Setup Funds in Simple Fund 360
- Uncover real-time analytical insights
- Bank Data - There is more than one way to automate
- Unlock Simple Fund 360's potential by activating the Share Data Pack
- **Increase your efficiency using Smart Matching and the New Documents Screen**
- Pensions: How to stop, start and monitor
- SuperStream Update
- Manage Depreciation from the beginning to the end in Simple Fund 360.
- ECPI changes and Actuarial Certificates
- Creating Workpapers in Simple Fund 360
- Unlock digital signing in Simple Fund 360
- Enter Distribution Statements easily with Distribution Tax Automation.
- TBAR Management in Simple Fund 360



Housekeeping

Questions during the Webinar?

All attendees in listen only mode. The Q&A window allows you to ask questions to BGL both during and after the webinar.

1. Click Q&A to open the Q&A window. You can move this window around your screen.
2. Type your question into the Q&A box.
3. Click Send.

The webinar will be recorded

The webinar will be recorded and posted on the BGL Community. All registered attendees will also receive an email with the link to the recording.





Join the BGL Community and connect
with like-minded professionals to
discuss all things SMSF!

community.bglcorp.com



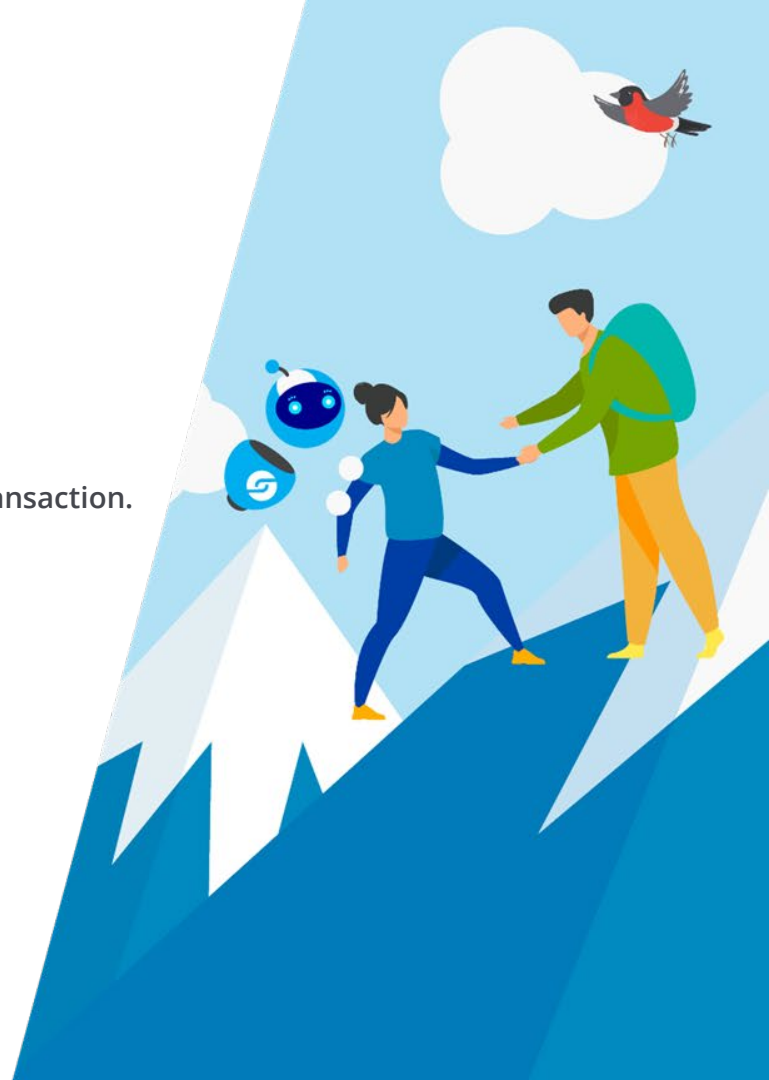
Today's Webinar

1. Functions of the Smart Matching Screen.
2. The New Documents Screen
3. Coming Soon – SmartDocs BGL



Functions of the Smart Matching Screen

- Uploading Bank Statements / Entering Transaction Data
- Organising transactions using the following actions:
 1. Match – Matches the transaction to an account.
 2. Search – Searches existing transactions to pair with the selected bank transaction.
 3. Split – Allows you to split the transaction to multiple different accounts.
 4. Matching Rules – Create a rule based on the transaction applying to all transactions in the future.
- Seamless connection with the BGL Bank Data Service.



The New Documents Screen

- Upload documents to Simple Fund 360.
- Store Simple Fund 360 Reports for easy access.
- View documents and reports.
- Group documents by account using folders.
- List account balances in selected financial years.
- Filter documents by tags.
- Adjust permission to restrict access to certain documents.

[SF360 Knowledge Centre – Documents Screen](#)



COMING SOON – SmartDocs by BGL

This feature simplifies the process of sending/managing documents with SF360.

- Each entity has a unique email.
- Sending documents to this email will upload the document to SF360.
- When the SmartDocs AI recognises documents correspond to existing bank transactions, the document is attached to the transaction.
- This can then be reviewed when matching transactions.

[SF360 Knowledge Centre - SmartDocs by BGL](#)



Helpful Links:

- ☐ [Smart Matching](#)
- ☐ [Fast Spreadsheet Data Entry \(Cash Code\)](#)
- ☐ [SmartDocs by BGL](#)

- ☐ [Matching Rules Screen](#)
- ☐ [Purchases and bank transactions are not automatically matching](#)

- ☐ [Documents Screen](#)

- ☐ [BGL Youtube Channel](#)
- ☐ [BGL Community](#)





Thank You!

 www.bglcorp.com

 info@bglcorp.com.au

 1300 654 401

 @BGLdot