

World's First.

T H O M A S 
D U D L E Y 



The World's First Push Button Syphon.

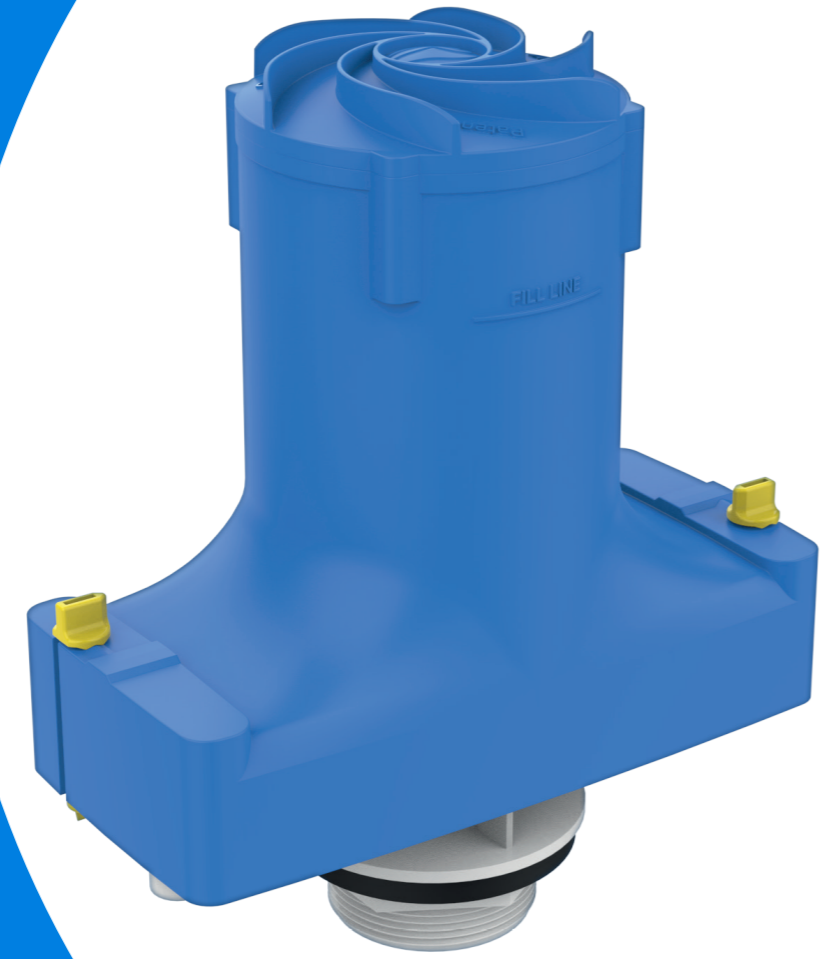


Quantum

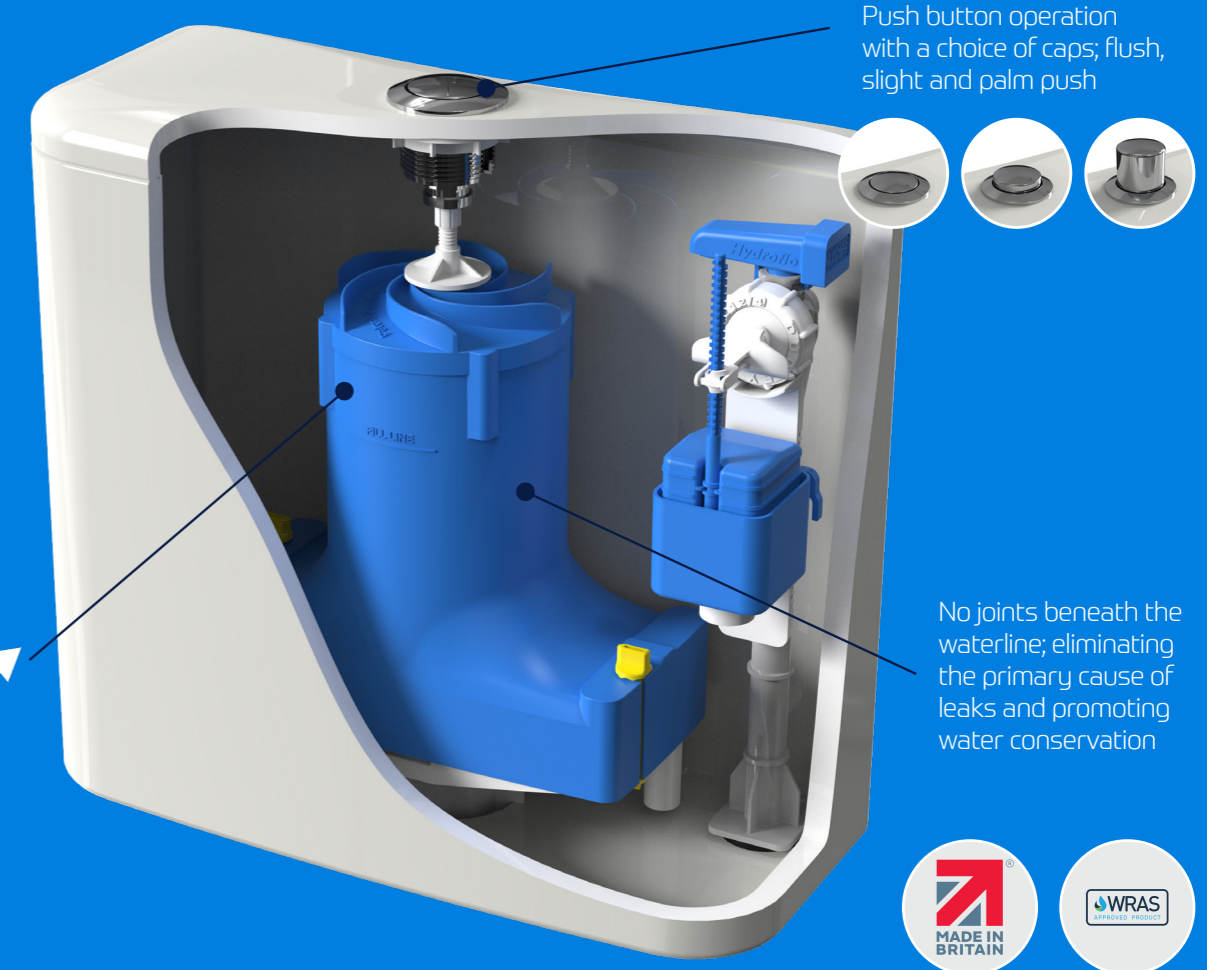
The World's First Push Button Syphon

The **Dudley Quantum** is a ground-breaking all **NEW** pushbutton operated **LEAK-FREE** syphonic toilet flush valve. This state-of-the-art product represents a significant leap forward in toilet flushing technology, offering unparalleled efficiency, reliability, and water conservation.

- Innovative pushbutton operation with a mechanically activated syphon, comes equipped with a user-friendly pushbutton mechanism
- Choice of three button caps: 1. Flush design, 2. 5mm Protruding design, 3. Palm push button
- Leak-Free syphonic technology designed and engineered in the UK in order to eliminate leaks and minimise water wastage
- The leak-free design enhances the durability of the valve and contributes to water conservation efforts as Thomas Dudley is committed to sustainability
- 10,000 hours of product development with leading Fluid Dynamics (CFD) experts
- Optimises water usage by eliminating leaks without compromising performance
- Easy installation and maintenance
- Crafted from high-quality materials
- Reliable and cost-effective choice for residential and commercial applications
- BS EN 997 compatible with specified WC pans



Syphons use a unique water lift mechanism, moving water upward before gravity takes over, ensuring a leak-free flush



Push button operation with a choice of caps; flush, slight and palm push

No joints beneath the waterline; eliminating the primary cause of leaks and promoting water conservation



The Problem

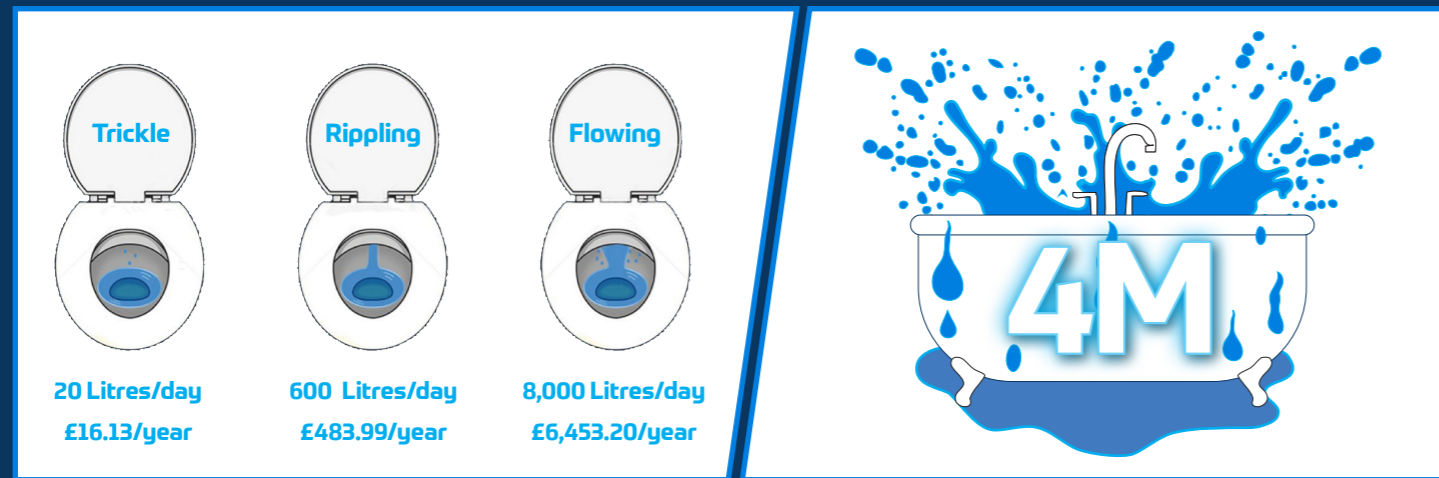
Widespread Issue: Over 1.5 million toilets are leaking across the UK at any given time, wasting enough fresh water to fill over 4 million baths daily.

Main Cause: The majority of leaks are due to faulty inlet or outlet valves, with 81% of leaking toilets having flush valve mechanisms.

Mechanism of Leakage: Flush valves often leak because debris or limescale builds up under the sealing washer, preventing it from sealing properly & causing water to trickle into the pan.

Dated Aesthetics: Traditional syphons, while leak-free and reliable, are seen as outdated due to their lever control.

Water Waste: On average, a leaking toilet wastes approximately between 215 and 400 litres of water per day, highlighting the significant impact on water resources.



The Solution

Water Conservation: Unlike valves, syphons do not have joints beneath the waterline, eliminating the primary cause of leaks and promoting water conservation.

Innovative Design: Syphons use a unique water lift mechanism, moving water upward before gravity takes over, ensuring a leak-free flush.

Syphon Technology: Replacing traditional valves with syphon technology can reduce leaks to nearly zero, saving water, money, and time.

Modern Appeal: Our innovative, leak-free, low-flush syphon-operated WC with a modern push button eliminates leaks and ensures efficient, contemporary flushing.

Regulatory Alignment: Syphon technology aligns with DEFRA's proposed water regulations, making it a practical and compliant solution for the building, maintenance, and water industries.



The source of **clever plumbing products, and people**



UK Enquiries

t +44 [0]121 530 7000

e info@thomasdudley.co.uk | w www.thomasdudley.co.uk



Export Enquiries

t +44 [0]121 530 7000

e export@cronexuk.com | w www.cronexuk.com



THOMAS 
DUDLEY 